

General Duty Safety Switch

Type VBII, 30 Amp, Type 1 (Indoor)

Standards and Ratings

- UL Listed under file #E4776
- Meets UL98 for switches and UL50 for enclosures
- Meets NEMA Standard KS-1 for enclosed switches
- Meets NEC wire bending space requirements
- Rated 10,000 AIC with Class H and plug fuses or 100,000 AIC with Class R fuses

- Suitable for use as service entrance equipment

Features

- Quick-make and break switching action
- Double break visible blade design
- Highly visible ON/OFF indication
- Single cover interlock

General Information

Catalog Number	Description	Ship. Wt. (lbs.) (Std Pkg)
LF111N	120V, 1 Phase, 2 Wire, Fusible (Plug Fuse)	35 (10)
LF211N	120/240V, 1 Phase, 3 Wire, Fusible (Plug Fuse)	35 (10)
GF221N ^{1 2}	240V, 1 Phase, 3 Wire, Fusible (Cartridge Fuse)	35 (10)

Horsepower Ratings³

Catalog Number	1 Phase, 2 Wire 120V AC		1 Phase, 2 Wire 240V AC		3 Phase, 3 Wire 240V AC		250V DC
	Std	Max	Std	Max	Std	Max	
LF111N	½	2	—	—	—	—	—
LF211N	—	—	1½	3	—	—	—
GF221N	—	—	1½	3	3	7½	5

Accessories

Catalog Number	Description
GSRK60	Equipment Ground Kit (Wire Range #14-2 Cu/Al)
W410190	Neutral Kit
GSRK321	Class R Fuse Clip Kit

Replacement Parts

Catalog Number	Description
W410472A	Replacement Interior 2-Pole Fusible (GF221N)

Mechanical Lug Wire Ranges (60/75°C, Cu/Al)

Description	Wire Range
Line, Load, Neutral	#14-6 AWG or #14-8 AWG

¹ These switches are UL Listed for application on grounded B phase systems.

² Suitable for 3-pole motor loads.

³ Dual horsepower ratings: Std - applies when non-time delay fuses are installed.
Max - applies when time-delay fuses are installed.

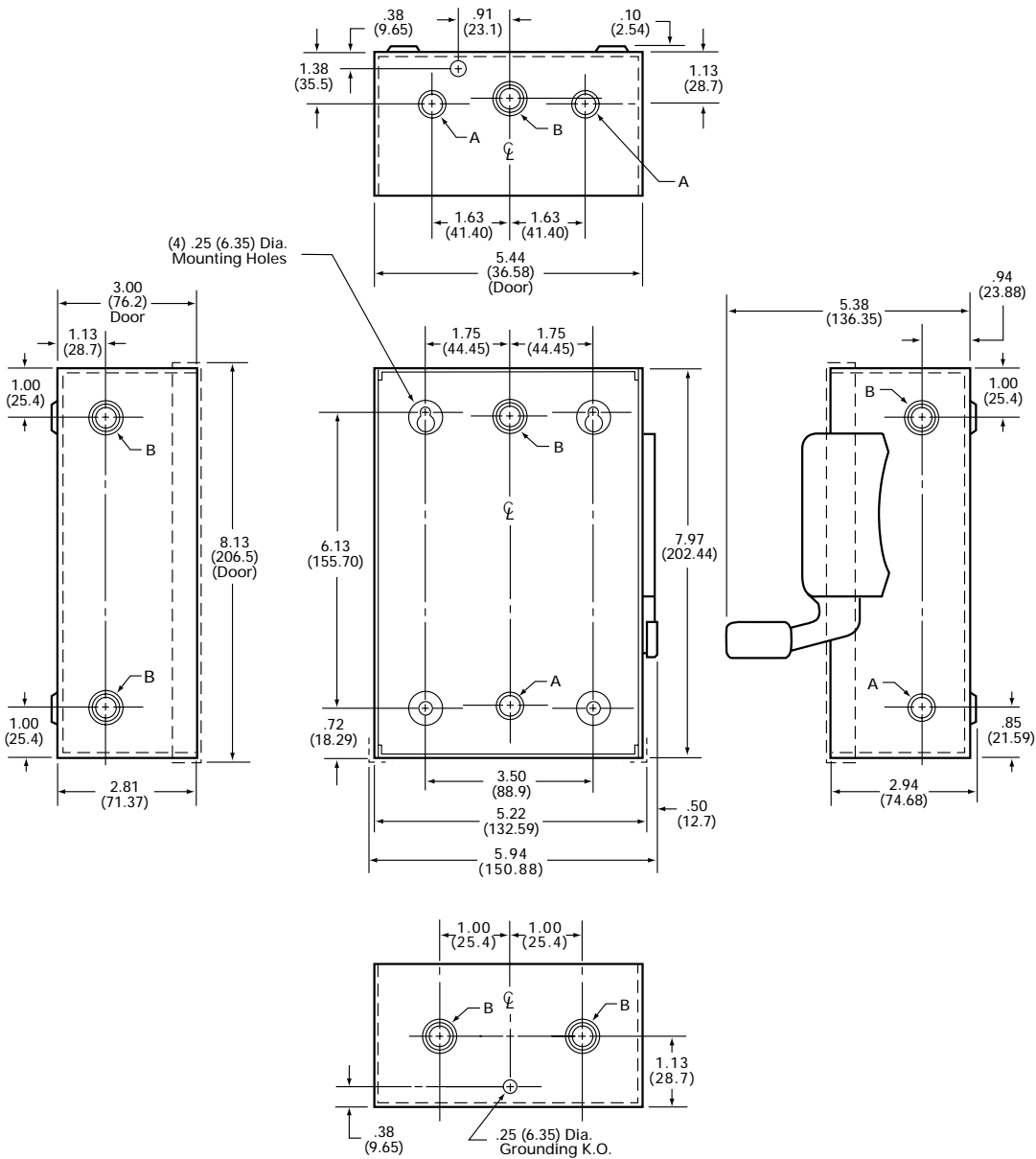
Product Specification Sheet GD30.1

Answers for industry.

SIEMENS

Product Specification Sheet #GD30.1 (page 2 of 2)

Dimension Drawing



Dimensions shown in inches and millimeters ().
 Dimension shown accurate to $\pm \frac{1}{8}$ inch.
 Note: Handle shown on front and right hand views only.

KNOCKOUT CODE	CONDUIT SIZE		
	.50	.75	1.00
A (Concentric)	.50	.75	
B (Concentric)	.50	.75	1.00

	LINE SIDE	LOAD SIDE
	WIRE BEND	WIRE BEND
Fused	2.00 (51)	1.50 (38)

Enclosure: Cold Rolled Steel
 .048 Thick (18 Gauge)
 Finish: ANSI Grey #61 Paint